



Assemblywoman Michaelle C. Solages

COVID-19 UPDATE
SEPTEMBER 2020

Dear Neighbor,

I hope you and your family remain well during these difficult times. The COVID-19 pandemic has affected every aspect of our lives and has forced us to make drastic adjustments to our daily routines. Since the pandemic began, our office has been working to help navigate constituents through this crisis. Please allow us to keep you updated on employment opportunities, upcoming events, and available community resources, such as food distributions. Email us at solagesm@nyassembly.gov to sign-up for our newsletter.

Sincerely,

Hon. Michaelle C. Solages
Assembly Member, District 22



Do You Need Hand Sanitizer?

Hand hygiene helps prevent the spread of COVID-19. Anyone who is in need of hand sanitizer may bring a clean bottle that holds up to 12 ounces and our office will refill it with NYS Clean Hand Sanitizer. Please call (516) 599-2972 for an appointment or visit us on our refill days.

**THURSDAY, SEPTEMBER 17TH AND
THURSDAY, SEPTEMBER 24TH
11:00 A.M. — 3:00 P.M.**

District Office of Assemblywoman Michaelle C. Solages
1690 Central Court — Valley Stream, NY 11580



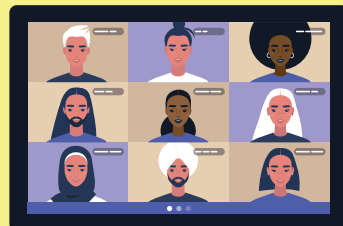
1690 Central Court
Valley Stream, New York 11580

PRSR STD.
U.S. POSTAGE
PAID
Albany, New York
Permit No. 75

Have questions or concerns? Connect with us virtually!

Our office continues to remain open during the COVID-19 pandemic. In addition to services over the phone, we are offering face-to-face video appointments as a solution for those seeking to meet with our office.

**Please call our district office at (516) 599-2972
or email us at solagesm@nyassembly.gov
to schedule an appointment.**



Fighting Hunger Through Food Distributions



Assemblywoman Michaelle Solages and Long Island Cares Food Distribution:

Wednesdays, 10:00 A.M. – 12:00 P.M.

Saturdays, 10:00 A.M. – 2:00 P.M.

Valley Stream Presbyterian Church

130 S. Central Avenue, Valley Stream, NY 11580

One box per month, per family • First come, first served • No appointment necessary • Nassau County residents only • Social distancing will be strictly enforced • Free Lyft credits available if needed

Additional Long Island Cares Food Distribution in Area

Elmont Senior Center

138 Elmont Road, Elmont, NY 11003

Tuesday and Wednesday, 10:00 A.M. – 2:00 P.M.*

Identification required for proof of residency in Elmont or neighboring village/hamlet in the Town of Hempstead

Stonewall Methodist Church

276 Louis Avenue, South Floral Park, NY 11001

Wednesday and Saturday, 10:00 A.M. – 2:00 P.M.

Identification required for proof of residency in South Floral Park or neighboring village/hamlet in the Town of Hempstead

Tabernacle of Victory Food Pantry

915 Hempstead Turnpike, Franklin Square, NY 11010

1st and 3rd Saturday of the month, 10:00 A.M. – 1:00 P.M.

**Information and hours are subject to change.*

Please call Long Island Cares at (631) 582-FOOD (3663) for more information.

State Legislature Enacts COVID-19 Legislative Package

The Assembly passed legislation to assist New Yorkers during this unprecedented public health crisis. These include measures that:

- Prevent utility companies from terminating services for New Yorkers who are economically impacted by COVID-19.
- Prohibit landlords from evicting tenants for unpaid rent for the duration of the COVID-19 state of emergency.
- Provide support and protections for schools by ensuring that school districts closed in the 2019-20 school year due to COVID-19 will not have state aid withheld.
- Provide financial relief for small businesses by allowing industrial development agencies (IDAs) to implement a state disaster emergency loan program that provides up to \$25,000 loans to small businesses and not-for-profit organizations.
- Direct the State Department of Health to study the impacts of COVID-19 on minority communities — who have been disproportionately affected — statewide.
- Established a COVID-19 public employee death benefit for the beneficiaries of any public employee who died of COVID-19.
- Protect New Yorkers from price gouging of medical supplies such as protective personal equipment (PPE).
- Expand whistleblower protections for health care workers who disclose improper practices concerning patient care and workplace safety to the public, including the disclosure of a lack of personal protective equipment (PPE).



Local COVID-19 Testing

COVID-19 testing is now available at Long Island Health Center in Elmont by appointment ONLY at an outdoor facility.

Antibody testing will also be available on Tuesdays and Thursdays from 9:00 A.M. to 1:00 P.M.

Please call (516) 396-7500 to schedule an appointment. All are welcome regardless of insurance or immigration status. Spanish and Creole speaking medical staff are available.

Call your medical provider immediately for any other symptoms that are severe or concerning to you.

Tès Pou COVID-19

Tout kote yo louvri pou fè tès lendi-vandredi 9:00 A.M. a 1:00 P.M. Tout tès yo se sou randevou. Rele (516) 396-7500 pou mande yon randevou. Tès pou COVID-19 la disponib nan Elmont. Si w panse ou menm oswa yon moun nan fanmi w gen COVID-19, RELE NAN (516) 396-7500.

YouTube

While we weren't able to have in-person forums due to the pandemic, we have hosted virtual events to keep you informed. Visit our YouTube channel to view all of our previous virtual workshops and webinars: Know Your Public Utilities Rights, COVID-19 Mortgage/Foreclosure Assistance for Homeowners, and more.

YouTube Assemblywoman Michaelle C. Solages
<https://bit.ly/2YL67xD>

The 2020 Census is happening now. Your response matters!

Health clinics, fire departments, schools, even roads and highways are all impacted by the census. It can shape many different aspects of your community. The census count directs federal funding for the next ten years to our community. You can respond online, by phone, or by mail. Responses are kept confidential.

www.2020census.gov
(English) 844-330-2020
(Español) 844-468-2020
(Kreyòl Ayisyen) 844-477-2020
(عربي) 844-416-2020

